

## Table of Contents

1 Introduction.....	<a href="#">2</a>
2 Installation.....	<a href="#">3</a>
3 Export and Import to/from Excel Spreadsheet.....	<a href="#">4</a>
3.1 Export to an Excel Spreadsheet.....	<a href="#">4</a>
3.2 Worksheet 'Categories'.....	<a href="#">6</a>
3.3 Worksheet 'Products'.....	<a href="#">7</a>
3.4 Worksheet 'Options'.....	<a href="#">9</a>
3.5 Import from an Excel Spreadsheet.....	<a href="#">11</a>
4 License.....	<a href="#">13</a>

## 1 Introduction

The Import/Export is a new administrative feature for OpenCart 0.7.7 which allows the admin user to do a bulk export of all the categories, products, and product options to an Excel spreadsheet file. The spreadsheet file can be edited off-line and then be re-imported to the OpenCart database.

This package also supports some additional optional database fields which are only used when installing other 3<sup>rd</sup> party contributions to OpenCart:

- `category_description.description`  
Adds the same description capabilities to categories as already exists for products.  
See the [Category Descriptions](#) contribution for more details.
- `product.featured`  
Ability to mark certain products as featured items.  
See the [Featured/Special Offer/Latest Products](#) contribution for more details.
- `product.special_offer`  
Ability to mark certain products as special offers.  
See the [Featured/Special Offer/Latest Products](#) contribution for more details.
- `product_to_option.weight_factor`  
Ability to adjust product weight according to its options.

## 2 Installation

1) Just copy the files from the 'upload' directory to your target installation directory of OpenCart.

2) After installation, the following files are overridden or newly added within the admin folder:

- admin/controller/export.php
- admin/extension/module/menu.php
- admin/language/english/controller/export.php
- admin/language/english/extension/module/menu.php
- admin/language/german/controller/export.php
- admin/language/german/extension/module/menu.php
- admin/OLE/OLE.php
- admin/OLE/PPS.php
- admin/OLE/PPS/File.php
- admin/OLE/PPS/Root.php
- admin/Spreadsheet/Excel/Reader.php
- admin/Spreadsheet/Excel/Writer.php
- admin/Spreadsheet/Excel/Reader/OLERead.php
- admin/Spreadsheet/Excel/Writer/BIFFwriter.php
- admin/Spreadsheet/Excel/Writer/Format.php
- admin/Spreadsheet/Excel/Writer/Parser.php
- admin/Spreadsheet/Excel/Writer/Validator.php
- admin/Spreadsheet/Excel/Writer/Workbook.php
- admin/Spreadsheet/Excel/Writer/Worksheet.php
- admin/template/default/module/menu.tpl

3) Before using this newly installed Export/Import feature for the first time, you must set the access rights for top administrator as follows:

In the admin interface, choose

Admin > Configuration > Users > User Group

From there, select 'Top Administrator', then click on the Update-icon to the right. This will open up an edit window with multi-choice drop-down lists for 'Access' and 'Modify' rights. In both of them, you'll see a new entry for 'Export' which you can select via a Ctrl-Click.

### 3 Export and Import to/from Excel Spreadsheet

The Export feature makes it possible to download all the categories, products, and product options to a MS Excel Spreadsheet which can be edited with the MS Excel 2003 or OpenOffice 2.x office software. The Import feature allows the admin user to upload the updated lists of categories, products, and product options to the server which then stores them to the server's OpenCart database.

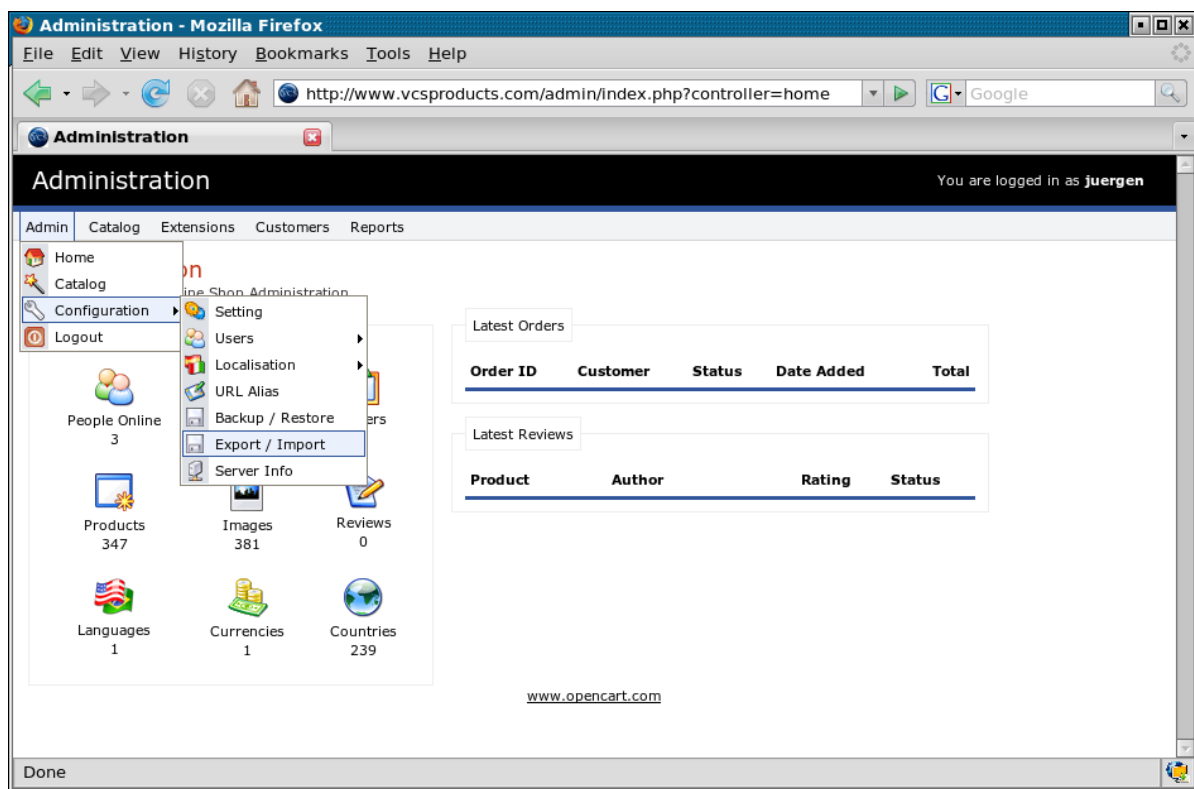
The spreadsheet always contains 3 worksheets:

- Categories
- Products
- Options

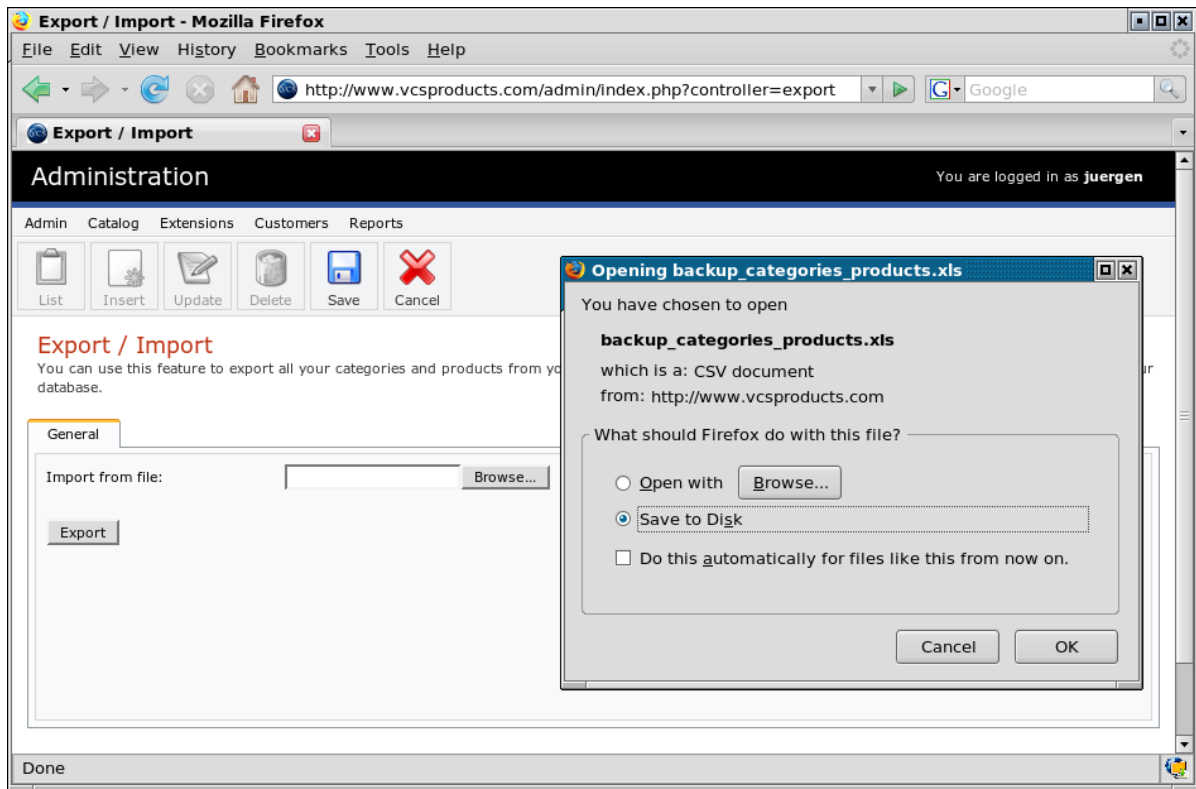
#### 3.1 Export to an Excel Spreadsheet

In order to download the categories, products, and product options to a Spreadsheet file, go to the admin interface and choose the menu entry

Admin > Configuration > Export / Import



This will lead to the Export / Import screen. Click on the 'Export' button to start the export. After a while, the web browser will open a dialog asking the user whether to open the downloaded file or whether to save it on the local hard drive. Choose the latter.



The default file name is *backup\_categories\_products.xls*. However, it is a good idea to change the name to something which includes the date and/or server name, for example

*backup-20080212.xls*

before saving it on the disk.

### 3.2 Worksheet 'Categories'

The worksheet 'Categories' lists all the product categories. The categories are arranged in a hierarchical order. The top-level categories are always displayed as the main menu entries of the website, while the lower level categories are being shown as drop-down sub-menus on the web server. VCS Products Info Sheets are treated like normal categories, without products, only containing a description.

The 'Categories' sheet always has a heading in the first row, to be followed by the actual category rows. The sheet uses the following columns for each row:

Column Name	Description
category_id	A unique category identifier consisting of an unsigned integer number.
parent_id	The identifier of the parent category. If there is no parent category because it is a top-level category then use zero.
name	A category name, for example <i>Timber Flooring</i> , or <i>DIY &amp; Hire</i> etc.
sort_order	A numeric value specifying the sort order of the current child category within its parent category.
image_name	The name of an image file associated with the category.
image_title	The image title which is displayed when hovering the mouse pointer over the category image.
date_added	The date when the category was newly introduced. Format is: <i>yyyy-mm-dd hh:mm:ss</i>
date_modified	The date when the category was last modified. Format is: <i>yyyy-mm-dd hh:mm:ss</i>
language_id	The language identifier, should always be <i>1</i>
description	The description of the category. Simple HTML tags such as <code>&lt;p&gt;...&lt;/p&gt;</code> for paragraphs etc can be used here.  Note: This field is only used when the <i>category_description.description</i> field is available in the database, see the <a href="#">Category Descriptions</a> contribution for more details.

### 3.3 Worksheet 'Products'

The 'Products' worksheet lists all the products. Each product belongs to one or more categories.

The worksheet always has a heading in the first row, to be followed by the actual product rows. It uses the following columns for each row:

Column Name	Description
product_id	A unique unsigned integer product identifier. If you change it, make sure the same change is also done in the 'Options' worksheet, too!
name	The product name.
categories	The categories the product belongs to. Each category is specified by its unique numeric category identifier. If there are more than one categories, the category entries have to be separated by commas. Examples: <i>22</i> or <i>224,226,227</i>
quantity	The stock quantity of the product. OpenCart can keep track of the product stock levels, or OpenCart can be configured to ignore it.
model	The product model name, can be left blank if it doesn't exist.
manufacturer	The manufacturer name of the product, can be left blank if not available.
image_name	The file name of the product image, usually a PNG or JPG file. It is recommended not to use images larger than 200 x 200 pixels to save server space and improve server speed.
image_title	The image title which is displayed when hovering the mouse pointer over the category image.
requires shipping	Use <i>yes</i> if the checkout process is to include a shipping quote in the final price. Otherwise use <i>no</i> .
price	The product price value specified in the default currency, for example <i>123.45</i>
sort_order	The numeric sort order value which determines the sort order of the product within the category.
date_added	The date when the product was newly introduced. Format is: <i>yyyy-mm-dd hh:mm:ss</i> This is the date used for finding the latest products listed on the home page.
date_modified	The date when the product was last modified. Format is: <i>yyyy-mm-dd hh:mm:ss</i>

date_available	The date when the product becomes available for sale. Format is: <i>yyyy-mm-dd hh:mm:ss</i>
weight	The product weight.
unit	The weight unit, such as <i>kg, g, lb, oz</i>
status enabled	In OpenCart it is possible to enable or disable a product. Possible values are: <i>true</i> or <i>false</i>
special offer	Certain products can be displayed as special offers on the home page. Possible values are <i>true</i> or <i>false</i>  Note: Only used when the database contains the additional field <i>product.special_offer</i> , see the <a href="#">Featured/Special Offer/Latest Products</a> contribution for more details.
featured	Certain products can be displayed as featured items on the home page. Possible values are <i>true</i> or <i>false</i>  Note: Only used when the database contains the additional field <i>product.featured</i> , see the <a href="#">Featured/Special Offer/Latest Products</a> contribution for more details.
tax_class_id	This should only be changed via the admin interface of OpenCart. The value is <i>0</i> if no sales tax is to be added in the final checkout process.
viewed	Shows how many times the product has been viewed by web site visitors. Leave value unchanged.
language_id	The language identifier of the product description. Use <i>1</i> for the English language.
description	The product description. Can include simple HTML tags such <code>&lt;p&gt;...&lt;/p&gt;</code> for paragraphs.
additional image names	Additional image file names for e.g. PNG or JPG images. Each entry is to be separated by a comma.
additional image titles	Additional image titles matching the additional images. Each entry is to be separated by a comma.

### 3.4 Worksheet 'Options'

The worksheet 'Options' lists all the product options. A product option consists of an option name, for example color or size, and option value, for example red, green, blue or large, medium, small. And for each option value the price increment or decrement is to be specified.

The worksheet always has a heading in the first row, to be followed by the actual product rows. It uses the following columns for each row:

Column Name	Description												
product_id	A unique unsigned integer product identifier. A product with the same identifier should also be listed in the 'Products' worksheet!												
language_id	The language identifier. Specifies the language in which the product option name is specified. Use <i>1</i> for the English language.												
option	The option value, such as <i>color</i> or <i>size</i> .												
option_value	The option value, such as <i>red, green, blue</i> or <i>large, medium, small</i> .												
price	The price value in the default currency. This specifies the increment or decrement to the normal product price for an option value. Example: <i>12.45</i>												
prefix	+ means the price is an increment - means the price is a decrement												
sort_order	A numeric value which specifies the order of the option values belonging to a product option. The default option value should be the one with a zero price increment and should therefore contain the lowest sort order.												
weight_factor	Certain kind of options, such as sizes or volumes, can influence the product weight and hence the final shipping costs. Example: <table border="1" data-bbox="571 1646 1216 1823"> <thead> <tr> <th>option</th> <th>option_value</th> <th>weight_factor</th> </tr> </thead> <tbody> <tr> <td>Size</td> <td>4 Litres</td> <td><i>1</i></td> </tr> <tr> <td>Size</td> <td>10 Litres</td> <td><i>2.5</i></td> </tr> <tr> <td>Size</td> <td>20 Litres</td> <td><i>5</i></td> </tr> </tbody> </table> <p>Note: Only used when the database field <i>product_to_option.weight_factor</i> is defined.</p>	option	option_value	weight_factor	Size	4 Litres	<i>1</i>	Size	10 Litres	<i>2.5</i>	Size	20 Litres	<i>5</i>
option	option_value	weight_factor											
Size	4 Litres	<i>1</i>											
Size	10 Litres	<i>2.5</i>											
Size	20 Litres	<i>5</i>											

It is possible to specify multiple options for a given product.

For example, the 'Jarrah' timber product may have the following options:

<u>product_id</u>	<u>option</u>	<u>option_value</u>
4001	Size and Grade	65 x 19 mm Standard grade
4001	Size and Grade	65 x 19 mm Select grade
4001	Size and Grade	85 x 19 mm Standard grade
4001	Size and Grade	85 x 19 mm Select grade
4001	Size and Grade	125 x 19 mm Standard grade

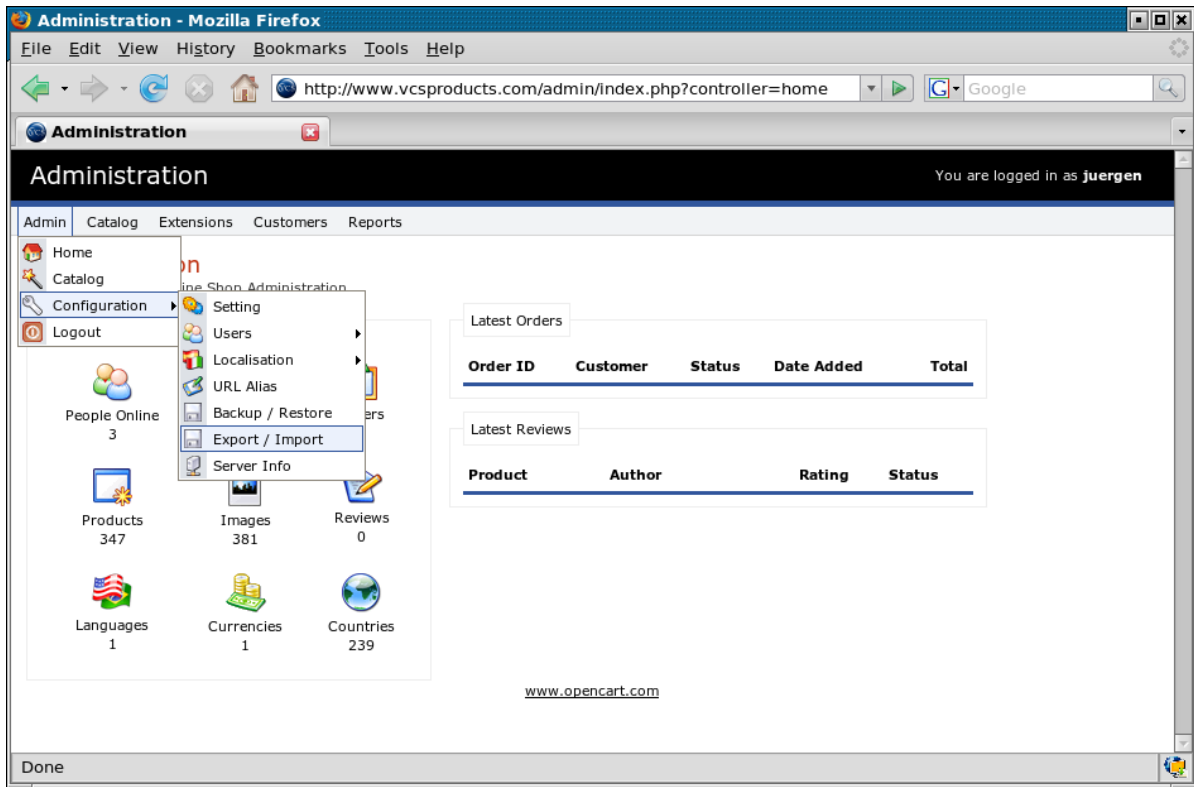
If there also was a '125 x 19 mm Select grade' available, then the option could be split up into two:

<u>product_id</u>	<u>option</u>	<u>option_value</u>
4001	Size	65 x 19 mm
4001	Size	85 x 19 mm
4001	Size	125 x 19 mm
4001	Grade	Standard grade
4001	Grade	Select grade

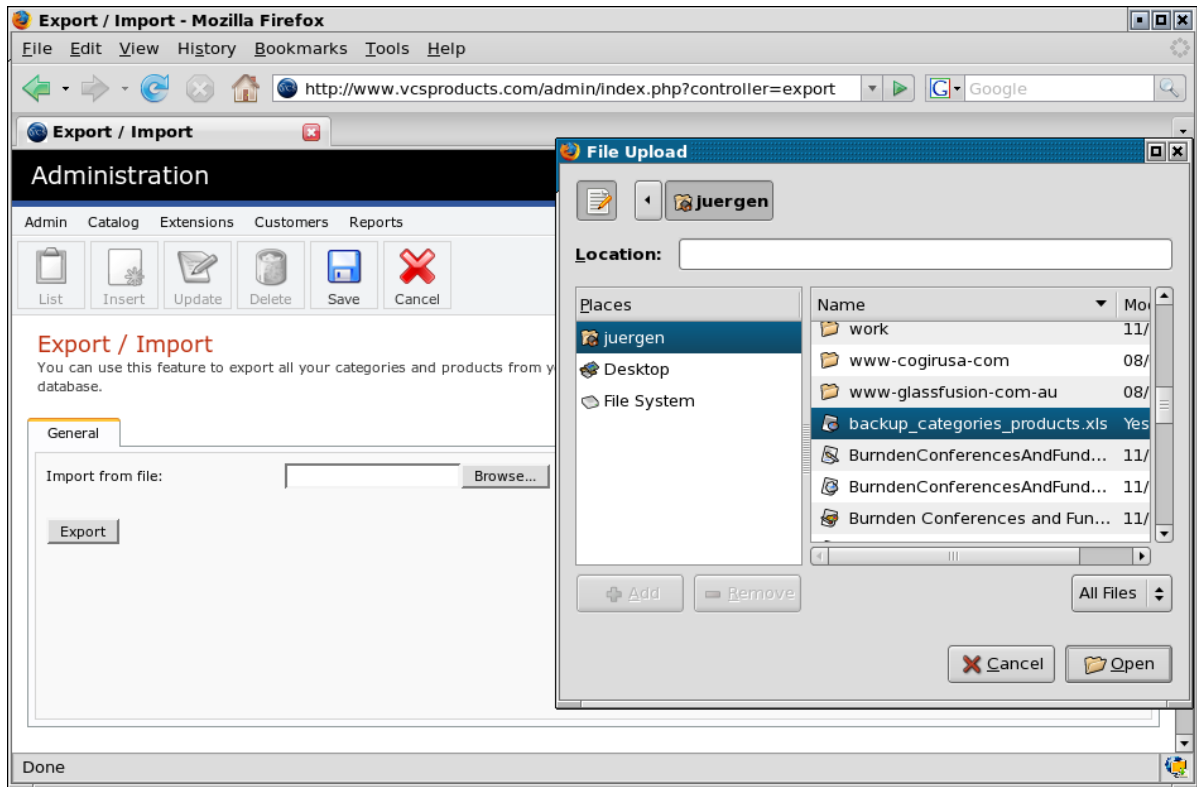
### 3.5 Import from an Excel Spreadsheet

After editing the spreadsheet it can be re-imported to server's database via the OpenCart admin interface:

First choose the Admin > Configuration > Export / Import menu entry and click on it:



From there you will see the Export / Import screen. Click on the *Browse* or *Choose* button (it's labeled differently depending on the web browser being used). This will open up a file dialog which allows the user to choose a previously exported spreadsheet file. After finishing the file selection dialog with an *Open*, just click on the *Save* button at the top of the Export / Import screen, and the backup file will be uploaded to the server and then written to the database. This may take a minute or two!



## 4 License

OpenCart is Copyright (c) 2006-2007 by Daniel Kerr and other contributors. See the websites at

<http://www.opencart.com/contact>

<http://www.opencart.com/contribution>

for more details.

This Export/Import package is Copyright (c) 2008 by Juergen Neuhoff t/a [MHCCORP.COM](http://MHCCORP.COM) and is made available under the terms of any of the following licenses at your choice:

- GNU General Public License Version 2 or later (the "GPL")  
<http://www.gnu.org/licenses/gpl.html>  
(See Appendix A in file 'license.txt')
- GNU Lesser General Public License Version 2.1 or later (the "LGPL")  
<http://www.gnu.org/licenses/lgpl.html>  
(See Appendix B in file 'license.txt')
- Mozilla Public License Version 1.1 or later (the "MPL")  
<http://www.mozilla.org/MPL/MPL-1.1.html>  
(See Appendix C in file 'licence.txt')

You are not required to, but if you want to explicitly declare the license you have chosen to be bound to when using, reproducing, modifying and distributing this software, just include a text file titled "legal.txt" in your version of this software, indicating your license choice. In any case, your choice will not restrict any recipient of your version of this software to use, reproduce, modify and distribute this software under any of the above licenses.